

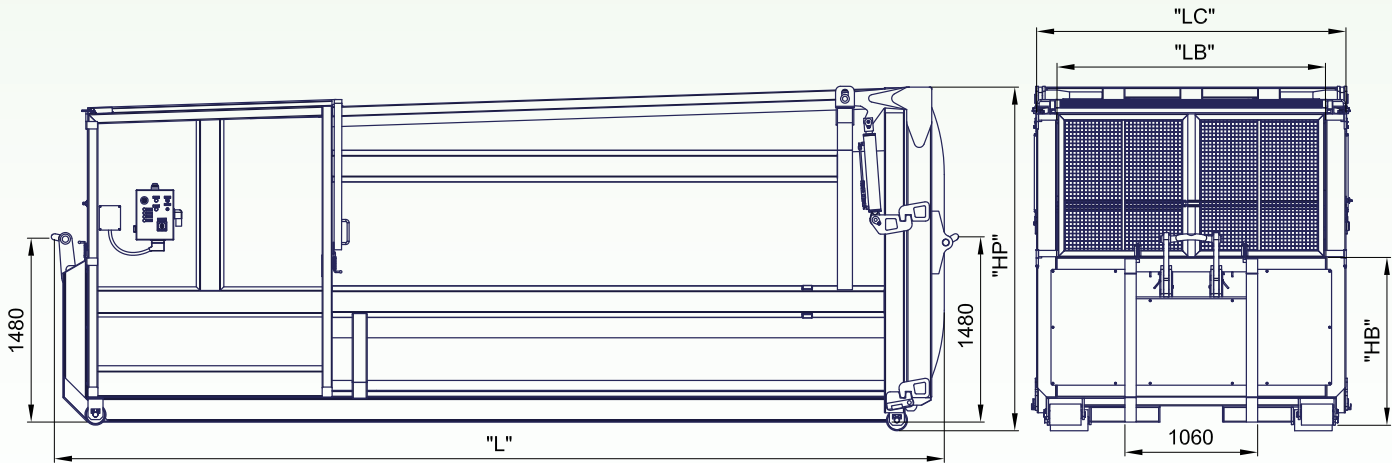
# SCREW COMPACTORS BTE



BTE Screw Compactors are suitable for compacting of almost all materials such as wood, bottles, foils and residual waste.

*"Compression chamber structure designed to face compaction forces up to 700 kN"*

- PLANETARY GEAR TRAIN
- GEAR TRANSMISSION SYSTEM (NO CHAINS).
- SCREW MOUNTED ON DOUBLE BALL-BEARING FIFTH WHEEL.
- VARIABLE PITCH CONICAL SCREW.



MODEL	CMPV18	CMPV20	CMPV22	CMPV24	CMPV26
Capacity (mc)	18	20	22	24	26
External Length (mm)	5800	6200	6300	6500	7000
External Width - LC (mm)	2500				
External Height (mm)	2650				
Hopper length (mm)	1800				
Hopper width - LB (mm)	2150				
Loading Hopper Hight - HB (mm)	1300				
Compression chamber length (mm)	2150				
Compression chamber width (mm)	1050				
Loading Hopper Hight - HB (mm)	1300				
Screw Diameter (mm)	750 - 550				
Screw speed (rpm)	12				
Power supply (V)	380				
Drive power (kW)	7,5				
Working Pressure (bar)	230				
Thrust (ton)	70				
Weight (kg)	5100	5200	5300	5400	5500
Noisiness (dbA)	78				

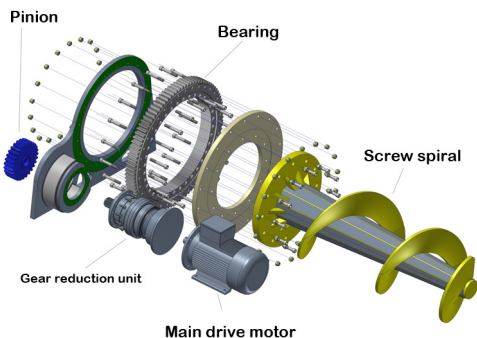
**PLANETARY GEAR TRAIN.** The transmission is ensured by a planetary gear train. The best choice for applications where there are shocks and overloads. Thanks to this device the torque is shared on more teeth in the same time.

**GEAR TRANSMISSION SYSTEM (NO CHAINS).** The transmission device is made by a pinion and a toothed wheel. This system ensures high range torques and the complete reversibility of the movement. All of this without generating backlash or sudden shocks as a chain system sure could do.

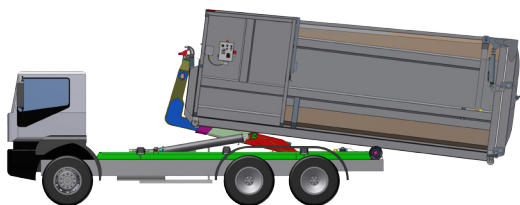
**SCREW MOUNTED ON DOUBLE BALL-BEARING FIFTH WHEEL.** The fifth wheel is designed to afford heavy continuous work.

**SCREW MADE FROM HIGH STRENGTH STEEL (S355JO).**

**VARIABLE PITCH CONICAL SCREW.**



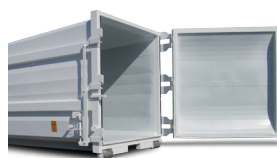
**LIFTING:** the compactor can be lifted by hooklift equipment. It has two lifting hooks (front and rear position) made in S355JR Ø 55 mm. The front hook is folding type to allow the hopper feeding.



**MOVEMENT:** the compactor can be moved by hook lift equipment, in order to be well positioned, dragging it on four rollers (rear and front).

**DISCHARGE DOOR:** door that allows emptying compacted materials out of the container (by gravity). Available in 2 models:

- **APB model:** upper and over hydraulic door. It is composed by 2 hinges, 2 hydraulic cylinders with overcenter valves, an opening system by hydraulic connection with the truck hydraulic system, rounded shape door, seal on the door perimeter (sides and bottom). The 130° opening angle avoids any contact between the door and waste material or the ground.



- **APL model:** side opening system (rotation 270°). It is composed by 3 hinges, lateral safety manual device, rounded shape door, seal on the door perimeter (sides and bottom).

**ELECTRICAL AND HYDRAULIC EQUIPMENT:** PLC control system, control panel, three-phases motor power rating 11 kW, electric supply 380V-50Hz, hydraulic unit.

- **Control panel:** It is equipped with connection plug 32A 3P + T. IP protection classes 65 (Complete protection against contact, protection from infiltration of dust, protection from water projected from a nozzle).

- **Hydraulic unit:** Positioned at the bottom of the compression chamber. Easily achievable from the external area below the hook ring.

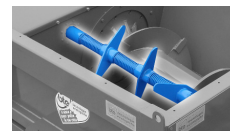
- **Operating mode:** manual or operating mode in which the machine cycles during a pre-set time, then stops automatically.

**PAINTING CYCLE:** Cleaning, pickling and interior paint with water epoxy primer. External painting WITH LOW ENVIRONMENTAL IMPACT polished catalyzed polyurethane water soluble enamel applied with Airless technology within the thickness of 70 - 90 microns, in single colour to define. Drying with forced drying oven at a temperature of 60°.

**OPTIONALS**

- Hydraulic lid to cover the feed hopper.
- Acoustic and visual warning signal for 75%.
- Remote panel (Start / Stop / Emergency stop).
- Watertight system.

- Crusher countershaft to drive the material into the screw movement.



*Authorized Dealer / Service*



*For further information please contact our local agent or BTE technical department.  
All product specifications are subject to change without prior notice.*