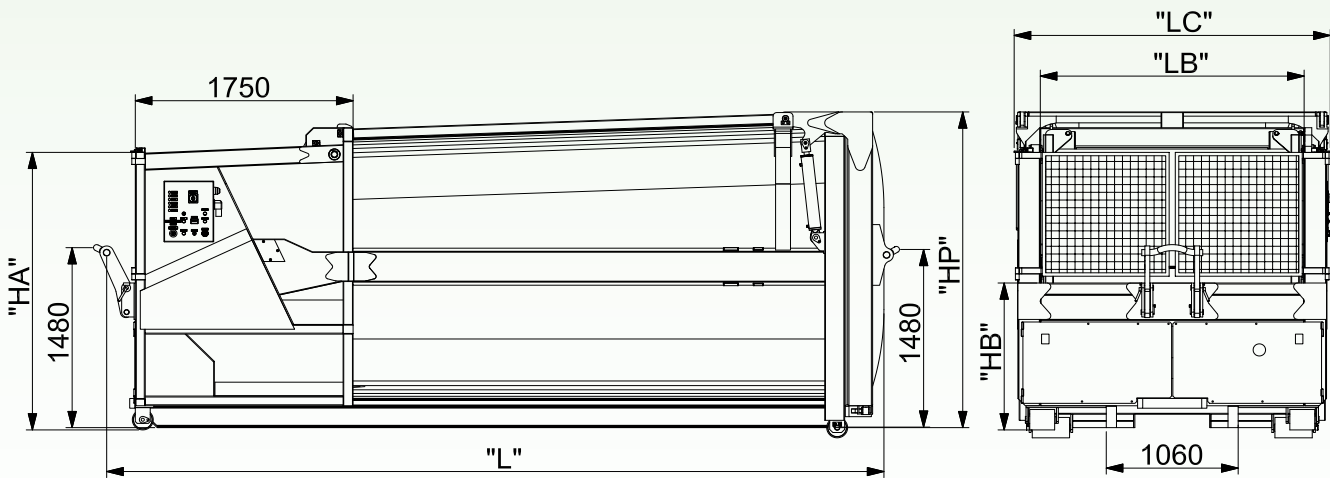


ROLL ON/OFF COMPACTOR CMPU



Single blade compactor is the perfect solution for the reduction of wet waste such as solid urban refuse.

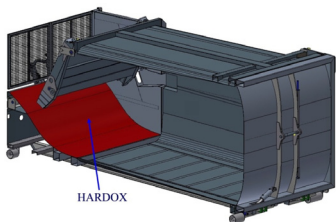
- COMPRESSION CHAMBER (BOTTOM) IN HARDOX 400
- FULL WATERTIGHT
- COMPACTION FORCE 50 TON



MODEL	CMPU16	CMPU18	CMPU20	CMPU22	CMPU24	CMPU25	CMPU26
Capacity (mc)	16	18	20	22	24	25	26
External length "L" (mm)	5600	5800	6000	6200	6500	7000	7200
External width "LC" (mm)	2500						
External height "HP" (mm)	2600						
Compression chamber length (mm)	1750						
Compression chamber width (mm)	2110						
Loading Hopper Height "HB" (mm)	1270						
Hopper length (mm)	1750						
Hopper width "LB" (mm)	2110						
Loading Hopper Capacity (mc)	6,1						
Cycle Time - Electric / Diesel - (sec)	32 / 38						
Blade Penetration (mm)	500						
Compressible Volume Per Cycle (mc)	2,6						
Waste Compaction Ratio	4:1						
Operating Voltage (V)	380						
Electric Control Voltage / Motor (kW)	11						
Diesel motor power (kW)	10,3 (2600 rpm)						
Working Pressure (bar)	230						
Compaction Force (ton)	40 - 50						
Weight (kg)	4900	5100	5300	5400	5500	5600	5700
Noisiness (dbA)	76						

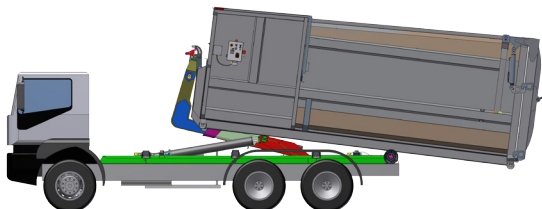
COMPACTOR: machine, consisting of a compaction unit and container that compacts loose materials into a container.

Compaction unit: all components directly involved in pressing the loose materials into the container and compacting them inside the container. The compaction chamber is the area in which the single blade moves to press and compact the material into the receiving container. The device for the compacting process is a single blade moved by 4 hydraulic cylinders (N.2 Cylinders for blade up and down movement - N.2 Thrust Cylinder thrust). The blade moves up and down on guide-rails.



Compaction chamber watertight structure.
Bottom sheet in HARDOX 400 thickness 4 mm.

LIFTING: the compactor can be lifted by hooklift equipment. It has two lifting hooks (front and rear position) made in S355JR Ø 55 mm. The front hook is folding type to allow the hopper feeding.



MOVEMENT: the compactor can be moved by hook lift equipment, in order to be well positioned, dragging it on four rollers (rear and front).

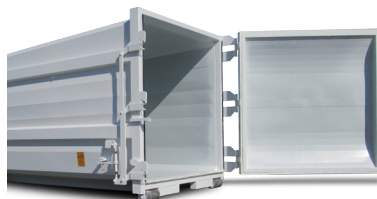
DISCHARGE DOOR: door that allows emptying compacted materials out of the container (by gravity). Available in 2 models:

- **APB model:** upper and over hydraulic door. It is composed by 2 hinges, 2 hydraulic cylinders with overcenter valves, an opening system by hydraulic connection with the truck hydraulic system, rounded shape door, seal on the door perimeter (sides and bottom). The 130° opening angle avoids any contact between the door and waste material or the ground.



Particular lock system with added cylinder to ensure door watertight.

- **APL model:** side opening system (rotation 270°). It is composed by 3 hinges, lateral safety manual device, rounded shape door, seal on the door perimeter (sides and bottom).



ELECTRICAL AND HYDRAULIC EQUIPMENT: PLC control system, control panel, three-phases motor power rating 11 kW, electric supply 380V-50Hz, hydraulic unit.

- **Control panel:** It is equipped with connection plug 32A 3P + T. IP protection classes 65 (Complete protection against contact, protection from infiltration of dust, protection from water projected from a nozzle).

- **Hydraulic unit:** Positioned at the bottom of the compression chamber. Easily achievable from the external area below the hook ring.

- **Compaction force:** 40 - 50 ton.

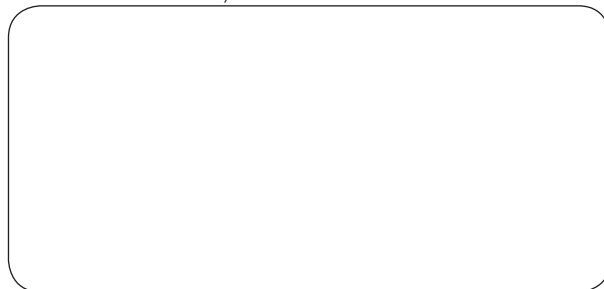
- **Operating mode:** manual or operating mode in which the machine cycles during a pre-set time, then stops automatically.

PAINTING CYCLE: Cleaning, pickling and interior paint with water epoxy primer. External painting WITH LOW ENVIRONMENTAL IMPACT polished catalyzed polyurethane water soluble enamel applied with Airless technology within the thickness of 70 - 90 microns, in single colour to define. Drying with forced drying oven at a temperature of 60°.

OPTIONALS

- Automatic initiation of cycle.
- Satellite vehicles presence read by photocells system.
- Hydraulic lid to cover the feed hopper.
- Compaction force 50 ton.
- Acoustic and visual warning signal for 75%
- Remote panel (Start / Stop / Emergency stop).
- DIESEL motor, power rating 10,3 kW.

Authorized Dealer / Service



For further information please contact our local agent or BTE technical department. All product specifications are subject to change without prior notice.